

# SUBWOOFER SERIES

## A SOUND FOUNDATION

Designed specifically to reproduce the low frequencies found in much of today's popular music, Rockustics sub-woofers are uniquely equipped to complete your total outdoor sound experience.

With a Rockustics sub-woofer you will at once be aware of the dramatic, full-bodied sound that emanates from the lowest of audible frequencies. Rockustics sub-woofers are crafted to accommodate large amounts of power output—required to present perfect bass response—without emitting even a hint of distortion because Rockustics Sub-woofers, as with all Rockustics speakers, are created exclusively for outdoor use, the sound performance is even more realistic and tangible than if they were to be used indoors. One listen and you'll feel why a Rockustics sub-woofer is the bedrock of any complete outdoor sound experience.

### PUNKSUB

This sedimentary rock styled sub-woofer—punctuated with a covering of holes to create the look of heavy, rain weathering—features 250 watt capabilities, and sub-bass reinforcement to satellite systems. Note that this speaker is partially buried.



### SUBROCK

Resembling the flaky, shale textures seen in up-state New York, this large and powerful sub-woofer with dual voice coil and 600 watt capabilities is inconspicuous and perfect for large, planted and garden settings. Low profile—the subtube is buried.



### BP SUB

Weathered granite with subtle tones, above-ground design, capable of delivering a whopping 700 watts and designed for the largest of outdoor areas requiring extremely high-end sound.



### BP JR

Weathered granite with subtle tones and above-ground design, the BP JR. Sub is capable of delivering 350 watts and is designed for the large outdoor areas requiring high-end sound.



# OMNI SERIES

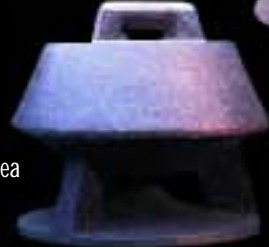
## SURROUND STONE

Offering 360° of omni-directional sound from a 2-way, 75-watt speaker. Very inconspicuous and ideal from placement in flower- and plant beds.



## COM360A

A smooth, granite finish adds to the contemporary look of this 2-way, 100-watt, omni-directional speaker. With excellent bass response, it is ideal for any outdoor area requiring 360° sound.



# ROCK SERIES

## PUNKROCK

River-rock design, these 2-way, 70 watt speakers are perfect for small backyards, and hot tub and patio areas.



## ROCKY III

Featuring a granite finish and a stylized grill, this 2-way, 70 watt speaker works best in small- to medium-sized backyards, patios, and hot-tub areas that require close-in sound. Open grill design is suited for placement in dense plants and shrubs.



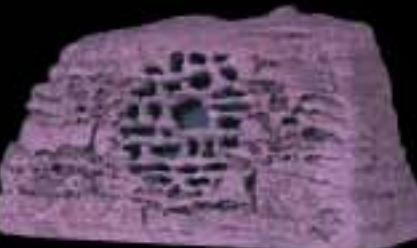
## ECONOROCK

With a porous and weathered sedimentary rock design, this 2-way, 70 watt speaker is ideal in small- to medium-sized areas.



## ROCQUETTE

Layered and weathered shale, the 2-way, 70 watt of inconspicuous sound will provide the finishing touch to small- to medium- sized backyards, pools, patios and gardens.



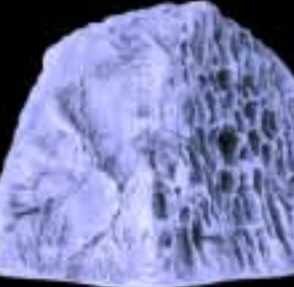
## TUNESTONE

Featuring the elegant look of granite, this 2-way, 70 watt speaker is well suited to most small- to- medium sized backyards, garden and pool areas. Open grill design is well suited for placement among dense plants or shrubs.



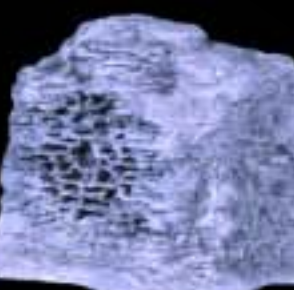
## PAVAROCCI

With the exotic look of weathered sedimentary rock, these 2-way, 70 watt speakers, are extremely versatile and suit areas ranging from large patios to small pool settings.



## SOUNDSTONE

An earthy, shale texture accentuates this 2-way, 100 watt speaker that fits perfectly into medium to large pool and patio areas.



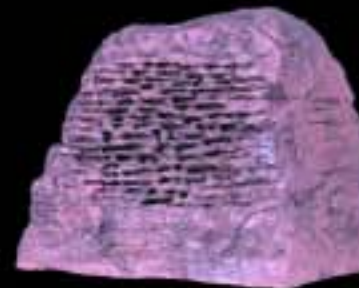
## ROCKY TOO

The layered and weathered, shale texture is a perfect compliment to any area. This 2-way, 100 watt speaker accommodates the needs of medium-sized yards, large pool and patio areas and commercial installations.



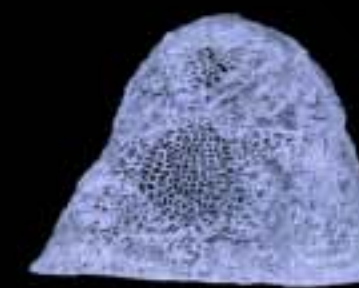
## OCTOROCK

With the weathered look of commonly found gneiss, this 2-way, 100 watt speaker fits beautifully in larger backyards and pool areas, and other settings which require more bass.



## ROCKY JR.

With the look of volcanic lava-rock, this 2-way, 100 watt speaker emits sound over a 100-150 feet distribution radius, and is exceptional for the largest of outdoor areas.



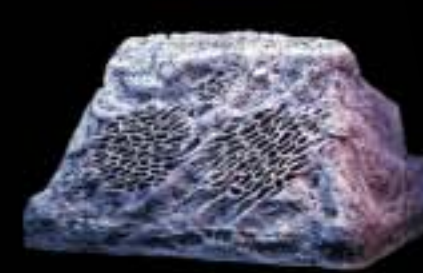
## STONEHENGE

The cornerstone of the Rockustics line, Stonehenge combines a special, hand-finished, mineral-dye process with a flawless granite exterior. Two-way, 150 watt speaker supplies peak performance for any large, outdoor area.



## HILLSIDE

This lava-rock motif, 2-way speaker delivers 200 watts of continuous, very loud, clear, dynamic sound to large open areas.



## ROCKOLYTH

Featuring subtle "Southwest-Style" petroglyphs, the ported granite cabinet hosts (2) 100 watt drivers and (1) 1" dome tweeter and provides the utmost in high-fidelity sound for large indoor or outdoor artistic settings. The Rockolyth is unique enough to stand on its own or to blend with the surroundings. You've got to hear it to believe it!



Winner of Audio-Video Interiors' "Excellence In Design" Award

# EUREAVE-À SERIES

These new EurEave-à surface mount speakers combine clean, functional Euro-styling, with the broadest sound-projection and unparalleled listening-area adjustability.

Developed through a partnership with Electro-Voice® —the leader in pro-sound for over 75 years—this new innovative design incorporates dual low-frequency drivers set at a 10-degree splay and a titanium dome tweeter center-mounted in EV's waveguide aperture design — features that provide you with the Ultra-Fidelity sound and the MILSpec 810-certified weatherability that Rockustics has come to be synonymous with.

Mounting is a snap too, utilizing the single cast-aluminum Strong-Arm-Mount™ bracket. This unique bracket provides 100-degrees of swing and 90-degrees of rotation, making for easy, flexible placement and unparalleled speaker alignment.

## EUREAVE-A SM 3.2

These 150 watts speakers are perfect for large residential and commercial areas.

## EUREAVE-A SM 4.2

At 200 watts the EurEave-à SM 4.2 will work in the largest outdoor areas providing 100° to 150° sound distribution.

## EUREAVE-A SM 6.2

These 300 watt, extended-bass-response speakers provide the largest outdoor areas with 150° - 200° of sound distribution.

## EUREAVE-A SUBWOOFER

The only Eave-mounted subwoofer on the market, this speaker provides the largest out door areas with 300 watts of rich full bass sound.



All EurEave-à speakers are available in a paintable off-white finish. Black is available by special order.

Transformer versions of the EurEave-à are available  
70 Volt: 7.5 Watt  
70/100 Volt: 15, 30, or 60 Watt

Zero-defects Lifetime Warranty

# GARDEN SERIES

## PLANTER

Designed to accommodate live plants, this terra cotta, floor planter features 2-way, 75 watt capabilities and is perfect for small- to medium-sized backyards, decks, porches and greenhouse areas.



## COCONUTZ

Add exotic sound and a tropical ambiance to your patio or garden with these 2-way, 75 watt speakers. Note: this speaker does not house plants.



## OMNIPLANTER

A large, circular floor planter with the look of terra cotta or granite, delivers 360° of dynamic sound and is designed to accommodate live plants and allow for drainage. Rotation-molded, UV stable, polyethylene is lightweight and low maintenance. Available in 2 sizes with either 6.5" coaxial or 8.0" coaxial drivers. This product series is popular in both residential and commercial settings.



# COLORS

Rock Series speakers are available in brown, gray and sandstone. The Planter speaker is available in Brown, Gray, Sandstone and Terra Cotta. The Omniplanters are available in Terra Cotta Granite and Gray Granite. The EurEave-à comes standard in a paintable off-white finish or black as a special order. Due to numerous variables associated with the printing process, product colors depicted within this catalog vary. See your retailer for swatches of stock colors. Custom colors are available by special request and are subject to additional charges.



Brown Gray Sandstone Granite Terra Cotta Granite Gray Terra Cotta Off White



## At the Core is Superior Sound



Whether it's 70 watts, 700 watts, or any wattage in between, you can be sure that you are hearing your music through the most finely designed and constructed outdoor speakers available.

Rockustics speakers are engineered with a lift at higher frequencies for maximum dissipation in the open air and the internal design of the speakers incorporate a smooth-finish molded sound chamber and non-parallel sides to minimize unnatural resonance. Rockustics speakers utilize professionally manufactured crossovers for exceptional performance. Specific frequency ranges filter exclusively into the separate VIFA woofers and tweeters for optimum sound delivery, free from even the slightest trace of distortion.

Rockustics exclusive 'open-grille' designs incorporate both an aesthetically pleasing look with—more importantly—better sound projection. Each Rock, Sub-Woofer and Planter-speaker is designed to project *through* landscape shrubbery, at 12-degrees above horizontal, to not only better reach your listening area, but to saturate your deck, pool, and patio-areas with rich, clear, Ultra-Fidelity sound.

## Every Speaker is a Work of Art

Combine the highest quality outdoor high-fidelity speakers with authentic environmental design and you have the all-weather Rockustics sound adventure. Enjoy state-of-the-art sound in your own backyard with Rockustics' nature-inspired designs.

Whatever your taste, Rockustics speakers can supply the foundation for transforming your backyard, pool or hot tub area into a high-fidelity paradise.



*Rockustics Inc.*

When it comes to innovation in audio and artistic perfection, Rockustics leaves no stone unturned. The Rockustics family of 27 models offers a wide range of speakers for all outdoor areas from small backyards, gardens and patios to the largest outdoor venue requiring the utmost in sound quality.

model	power	driver	impedance	dimensions	wt. ea./lbs	applications
<b>ROCK SERIES</b>						
PUNKROCK	75 watts	5.25" coax	4 ohms	10.5"W x 9.5"D x 8.25"H	11	small backyards, patios or hot tub areas
ROCKY III	70 watts	6.5" coax	4 ohms	12.5"W x 12.5"D x 10.5"H	14	small to medium backyards, patios or gardens
ECONOROCK	70 watts	6.5" coax	4 ohms	10.5"W x 12.5"D x 10.5"H	15	hotel venues and larger patio areas
ROQUETTE	70 watts	6.5" coax	4 ohms	15.5"W x 11"D x 9"H	16	small to medium backyards, pools and patios
TUNESTONE	70 watts	8" coax	4 ohms	15.5"W x 11.5"D x 14.5"H	28	small to medium backyards, pools, patios
PAVAROCCI	70 watts	8" coax	4 ohms	16"W x 13.5"D x 12.5"H	24	medium to large backyards, pools and patios
SOUNDSTONE	100 watts	6.5" coax	4 ohms	14.5"W x 11.5"D x 11.75"H	27	medium to large areas and commercial settings
ROCKY TOO	100 watts	6.5" coax	4 ohms	21.75"W x 12"D x 11.5"H	31	medium to large yards, pools, patios and gardens
OCTOROCK	100 watts	8" coax	4 ohms	16"W x 12.25"D x 12.5"H	32	larger areas requiring more bass
ROCKY JR.	100 watts	6.5" w/1" tweeter	4 ohms	20"W x 10.5"D x 16"H	34	largest outdoor areas: 100'-150' sound distribution
STONEHENGE II	150 watts	8" w/1" tweeter	4 ohms	17.25"W x 14.5"D x 17.75"H	45	large residential and commercial applications
HILLSIDE	200 watts	(2)-8" w/1" tweeter	8 ohms	26"W x 26"D x 18"H	85	large open areas, theme parks, public areas
ROCKOLYTH	200 watts	(2)-8" w/1" tweeter	8 ohms	22"W x 18"D x 40"H	150	largest indoor or outdoor areas
<b>GARDEN SERIES</b>						
PLANTER	75 watts	5.25" coax	4 ohms	27"W x 8.5"D x 12.25"H	25	anywhere you would place planters
OMNIPLANTER 6.5	70 watts	6.5" coax	4 ohms	20" dia x 18"H	14	areas requiring omni-directional sound and live plants
OMNIPLANTER 8.0	70 watts	8" coax	4 ohms	24" dia x 20"H	20	areas requiring omni-directional sound and live plants
COCONUTZ	75 watts	5.25" coax	4 ohms	7" dia x 12.5"H	12	tropical settings, restaurants and commercial settings
<b>OMNI SERIES</b>						
SURROUNDSTONE	75 watts	5.25" coax	4 ohms	15" dia x 12.5"H	40	amusement parks and public areas
COM360A	100 watts	8" w/1" tweeter	5 ohms	20" dia x 17"H	50	any outdoor area requiring omni-directional sound
<b>SUBWOOFER ROCKS</b>						
PUNKSUB	200 watts	(2)-8" woofers	4 ohms	21"W x 18"D x 11.5"H (above ground) 21"W x 18"D x 17.75"H (below ground)	125	small areas requiring sub-bass reinforcement
BP JR SUB	350 watts	10" woofer	8 ohms	24.5"W x 20"D x 15"H	180	outdoor areas requiring sub-bass reinforcement
SUB-ROCK	600 watts	15" woofer	8 ohms	37"W x 33"D x 12"H (above ground) 15" dia x 34"H tube (below ground)	250	large theme and entertainment parks
BP SUB	700 watts	(2)-10" woofers	8 ohms	36"W x 28"D x 15"H	320	large outdoor areas requiring the best sound
<b>EUREAVE-A SERIES</b>						
EUREAVE-A SM 3.2	150 watts	(2)-3.5" w/ .75" tweeter	8 ohms	5.1"W x 6.5"D x 9.2"H	8.6	large residential and commercial applications
EUREAVE-A SM 4.2	200 watts	(2)-4" w/1" tweeter	8 ohms	6.9"W x 8.5"D x 12.2"H	19	largest outdoor areas: 100'-150' sound distribution
EUREAVE-A SM 6.2	300 watts	(2)-6" w/1" tweeter	8 ohms	9"W x 11.75"D x 16.5"H	27	largest outdoor areas: 150'-200' sound distribution
EUREAVE-A SUBWOOFER	300 watts	(2)-6" woofers	8 ohms	9"W x 11.75"D x 16.5"H	4	larger areas requiring more bass



**VIFA INSIDE**

All Rockustics speakers feature VIFA drivers. This superb product of Denmark has been specifically designed for each of our models for optimal sound and durability. We're so confident with our sound and quality that we back each of our speakers with a "Zero Defects" lifetime warranty.

### ZERO DEFECTS LIFETIME WARRANTY

Music is eternal and that's how long we stand behind our speakers. We guarantee to you, the original purchaser, that each speaker cabinet and components to be free from manufacturer's defects for the life of the product as long as the speaker remains in the original installation and preventative maintenance is strictly followed. Warranty void if speaker shows signs of blatant misuse or overpowering.

### CUSTOMER SERVICE

Rockustics products are produced with the utmost care by our expert craftsmen. If you have any questions about the application, use or function of any of our products, or should any problems arise, please call us: Toll Free 800-875-1765. We also encourage our customers to call with any helpful suggestions or comments they may have: customer's experiences have always been an integral part of our products and design. Please e-mail us at [info@rockusticsinc.com](mailto:info@rockusticsinc.com) or give us a call.

### RETURN POLICY

All merchandise returned to Rockustics for any reason must be accompanied by a return authorization number. Contact Rockustics customer service department to obtain an authorization number and ship the unit pre-paid with the R.A. number clearly marked on the returned package. Bill of sale or proof of purchase must accompany all returns.

for more information or the dealer nearest to you, please contact

5080 Paris Street •  
303-371-0208 • 800-875-1765 •  
e-mail: [info@rockusticsinc.com](mailto:info@rockusticsinc.com) •



• Denver, Colorado 80239 USA  
• fax 303-371-0604  
• visit us at: [www.rockusticsinc.com](http://www.rockusticsinc.com)

# Rockustics Inc.

ultra-fidelity outdoor speakers



## Forging Perfect Harmony

Rockustics Inc. features a product line of 27 models of high-fidelity, all-weather outdoor speakers for both home and commercial applications. Each model is designed to enhance their environment by providing the highest quality sound with unparalleled aesthetics.

Founded in 1987, the first Rockustics speakers had hand-chiseled lava rock cabinets that averaged over 300 pounds each. Now, all cabinets are made from non-polluting, stone and resin compound using over 90% recyclable products making them not only natural looking, but earth-friendly as well.

All Rockustics zero defects, lifetime warranted speakers are manufactured in our Colorado facility. They are available throughout the world via a network of audio/video dealers, specialty stores, sound engineers, sound contractors and specifiers. Speakers are also available at select garden centers, specialty pool and patio dealers, landscape architects and designers.

## Form & Function

Rockustics speakers aren't just great speakers put into pretty frames; they are the product of custom sound contractors, acoustic design engineers and specialists in applied fine arts working together to create a speaker like no other. A speaker whose form and function operate as one to create a harmonic feast for your ears and eyes.

All Rockustics speakers are 100% water- and weatherproof with loudspeaker components that are fiber-reinforced polymer composite and proven to resist rain, frost, snow and ice. And to prove just how tough our speakers are, we back each and every model with a Zero Defects Lifetime Warranty.

